

# Notice to Mariners

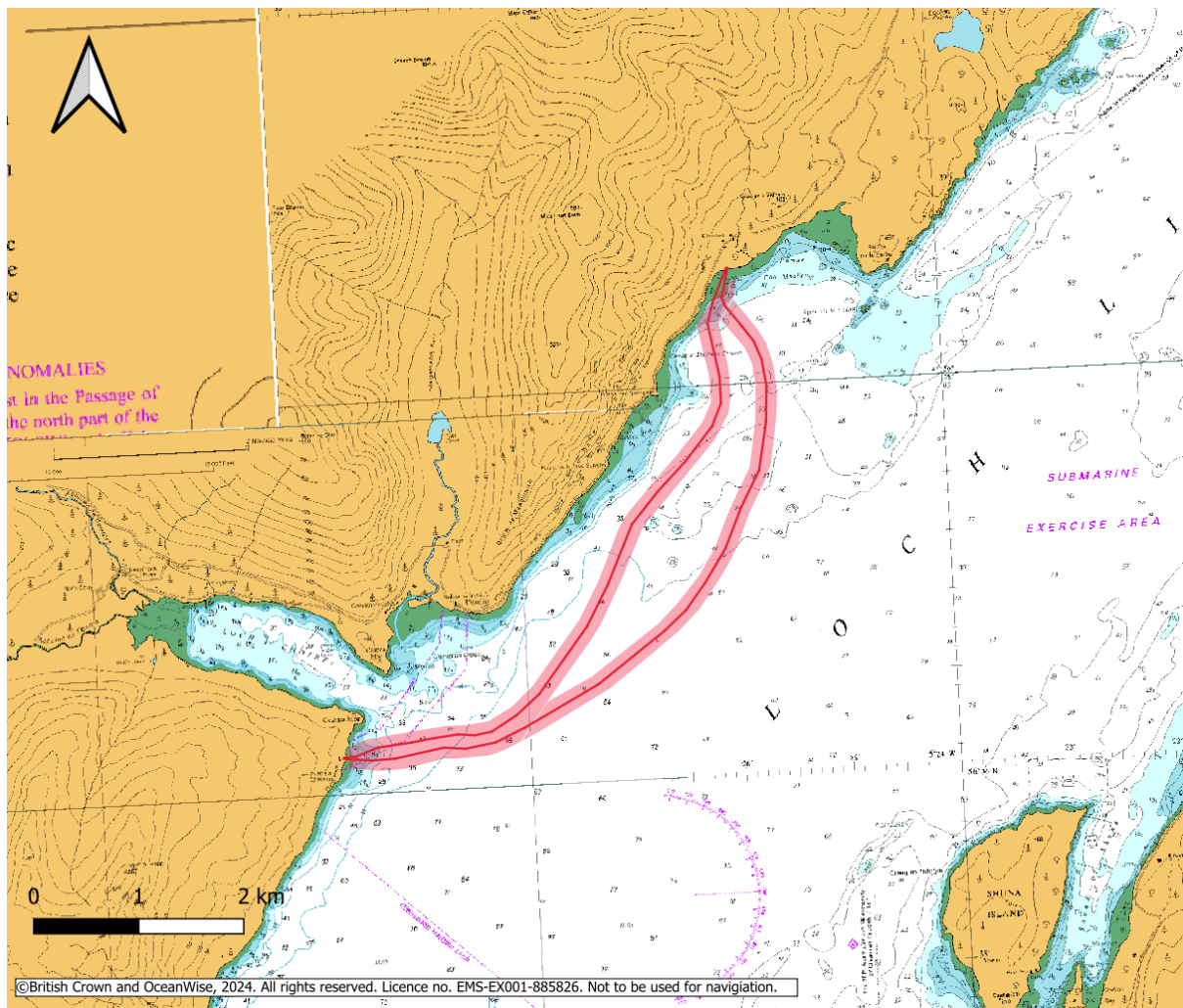
## Vessels and General Safety Advice

**Scottish Hydro Electric Power Distribution (SHEPD)  
Loch A'Choire / Loch Linnhe Geotechnical Surveys**

**Date of issue: 15/11/2024**

Please be advised that A-2-Sea Solutions Ltd (on behalf of SHEPD) are undertaking a marine geotechnical survey along the two cable routes within Loch Linnhe as detailed below. Surveys will survey vessel 'Mintaka I' to complete survey operations:

Offshore operations will be undertaken between 23<sup>rd</sup> November and 9<sup>th</sup> December 2024 with a planned total duration of four days works during this period, weather permitting.



**Figure 1: Cable routes for geotechnical survey**

The Loch A'Choire / Loch Linnhe sampling operations will be concentrated within a 200m corridor centred on the two routes defined by the following coordinates.

**Table 1: Survey Area Loch A-Choire / Loch Linnhe**

Loch A-Choire / Loch Linnhe							
Northern Route				Southern Route			
Latitude	D D.M	Longitude	D D.M	Latitude	D D.M	Longitude	D D.M
56;36.1791N		005;29.7415W		56;36.1673N		005;29.7421W	
56;36.2355N		005;29.4183W		56;36.1754N		005;29.2615W	
56;36.2819N		005;28.6719W		56;36.2174N		005;28.8061W	
56;36.2868N		005;28.3564W		56;36.2066N		005;28.6031W	
56;36.4666N		005;27.8946W		56;36.2307N		005;28.3236W	
56;36.8007N		005;27.4178W		56;36.5022N		005;27.3372W	
56;37.0061N		005;27.2074W		56;36.7579N		005;26.6987W	
56;37.3124N		005;26.9482W		56;36.8572N		005;26.4911W	
56;37.7929N		005;26.1587W		56;37.1629N		005;26.0932W	
56;37.9091N		005;26.0678W		56;37.5538N		005;25.7426W	
56;38.0457N		005;26.0651W		56;37.9801N		005;25.6101W	
56;38.3193N		005;26.1505W		56;38.1170N		005;25.6458W	
56;38.4218N		005;26.0955W		56;38.2177N		005;25.7242W	
56;38.5730N		005;25.9662W		56;38.4031N		005;25.9774W	
56;38.6084N		005;25.9599W		56;38.4986N		005;25.9835W	
				56;38.6103N		005;25.9398W	

The operations will be undertaken by the vessel Mintaka 1 pictured below.

Vessel Photo	Vessel Description
<p><b>Mintaka</b></p> 	<p>The Mintaka 1 is a multi-purpose survey vessel. 40 m in length with a beam of 6m and a draft of 2 m; transit speed of 12 kts and a survey speed of 4-6 kts. Operating on a 24-hour basis. Mintaka call sign is HO6142.</p> <p>Contact: Vsat +31 223705008 / Mob: +48 602421456</p>

## Survey Description

The survey will involve collection of seabed geotechnical sediment testing utilising CPT and vibrocore equipment. This involves Mintaka holding station at certain points along the route to carry out the testing.

Other vessels should maintain an appropriate and safe distance of 500 m when passing Mintaka 1 whilst undertaking operations and should pass at the lowest possible speed to avoid vessel wash effects. The vessel(s) will be working 24-hour operations and will display appropriate day shapes and lights during reduced visibility and night operations. The vessel(s) will also monitor VHF Channels 16 and 12.

The NtM is to advise mariners of the vessel activity within the area., No fishing gear clearance is requested for these works.

## Primary Survey Equipment

Primary equipment	Towed, Hull mounted, Sampling	Approximate tow length (if applicable)	Vessel
CPT	Sampling	N/A	Mintaka
Vibrocore	Sampling	N/A	Mintaka

## Contact Details

The vessel contact details are given in the tables below

VESSEL 1- Mintaka	
Call sign	HO6142
Bridge	Telephone Number: +31 (0) 223 705 008 (Sat)
Offshore manager / Party Chief	Megan Kirwan
Onshore Site Manager	Gavin Loveridge
Email	Gavin.loveridge@a2sea.co.uk

## Fisheries Liaison Officers

Fishing liaison for the operations will be co-ordinated by Brown and May Marine (BMM). For any commercial fishery queries please contact the Company Fishing Liaison Officers (CFLO):

Alex Winrow-Griffin (07760 160039 / [alex@brownmay.com](mailto:alex@brownmay.com))

The local Fishing Industries Representative (FIR) will also be in place to liaise with the vessels and fishing operations in the survey area.

George White (07761 873965 / [georgewhite0@gmail.com](mailto:georgewhite0@gmail.com))

### Further Details

Further enquiries should be addressed to the following people in the following order:

Name	Contact Number	Email
Christopher Briggs	+44(0) 1794 830 909 (Office)	Chris.briggs@a2sea.co.uk
Liam Flynn	+44(0) 1794 830 909 (Office)	Liam.flynn@a2sea.co.uk

### Distribution List

Any stakeholders identified within the relevant Fishing Liaison Management Action Plan (FLMAP), will be included on the distribution list for this NtM.

### Legal Notice

Please be advised that this Notice to Mariners should be treated as official notice of the nature, duration and location of the works which are scheduled to take place. During the period of this notice, we request that you plan your activities around our short-term, temporary activities.

Any failure to remove equipment or entry into the identified location in a manner that would constitute a hazard would be a breach of your duties of safe seamanship as described in the Convention on International Regulations for Preventing Collisions at Sea 1972 and/or the Merchant Shipping Act 1995 and may result in removal of the relevant equipment. Failure to remove equipment or entry into the identified location in a manner that would constitute a hazard may constitute a breach of duty of care at common law, and a failure to protect submarine cables for successful seabed user co-existence under Scotland's National Marine Plan.